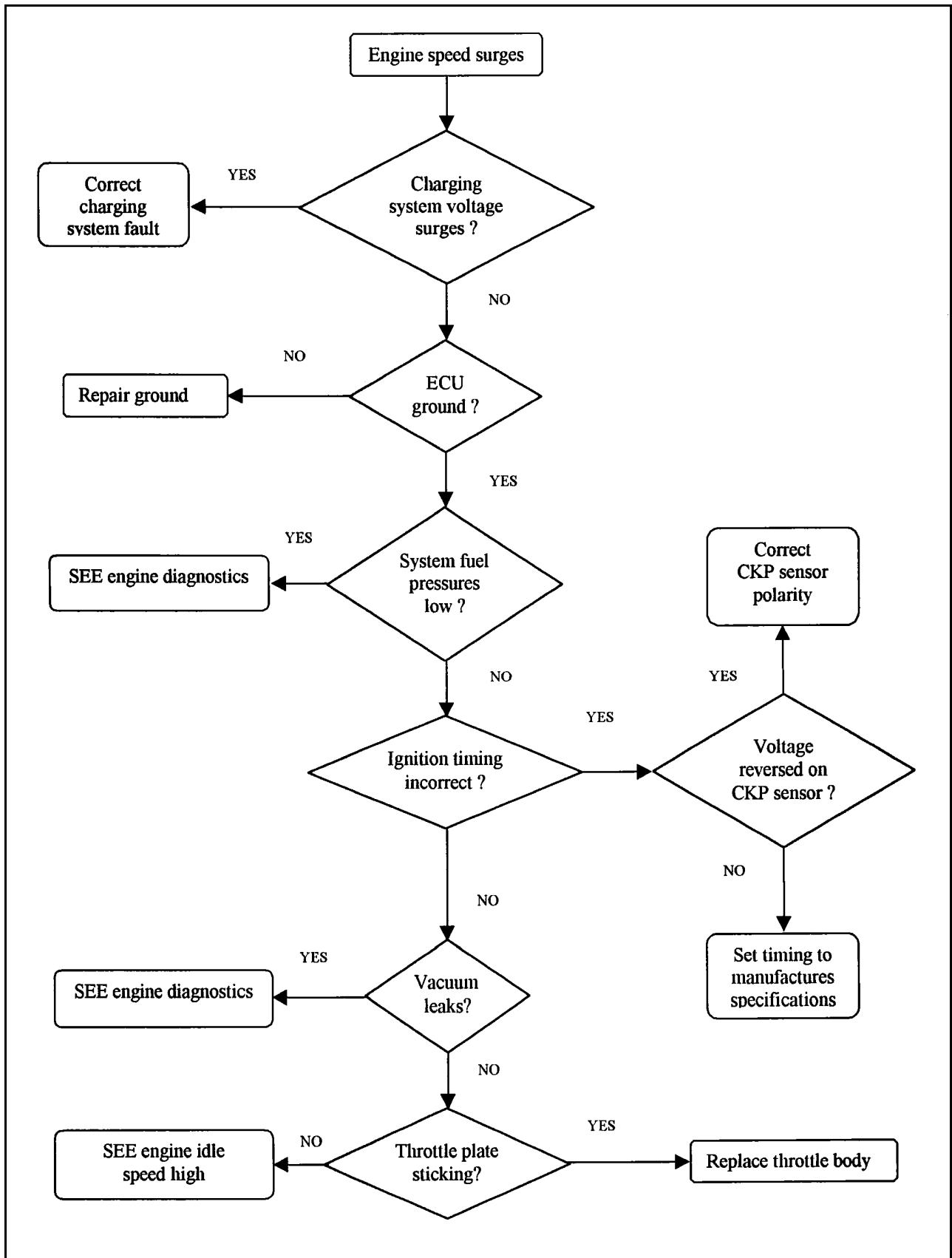
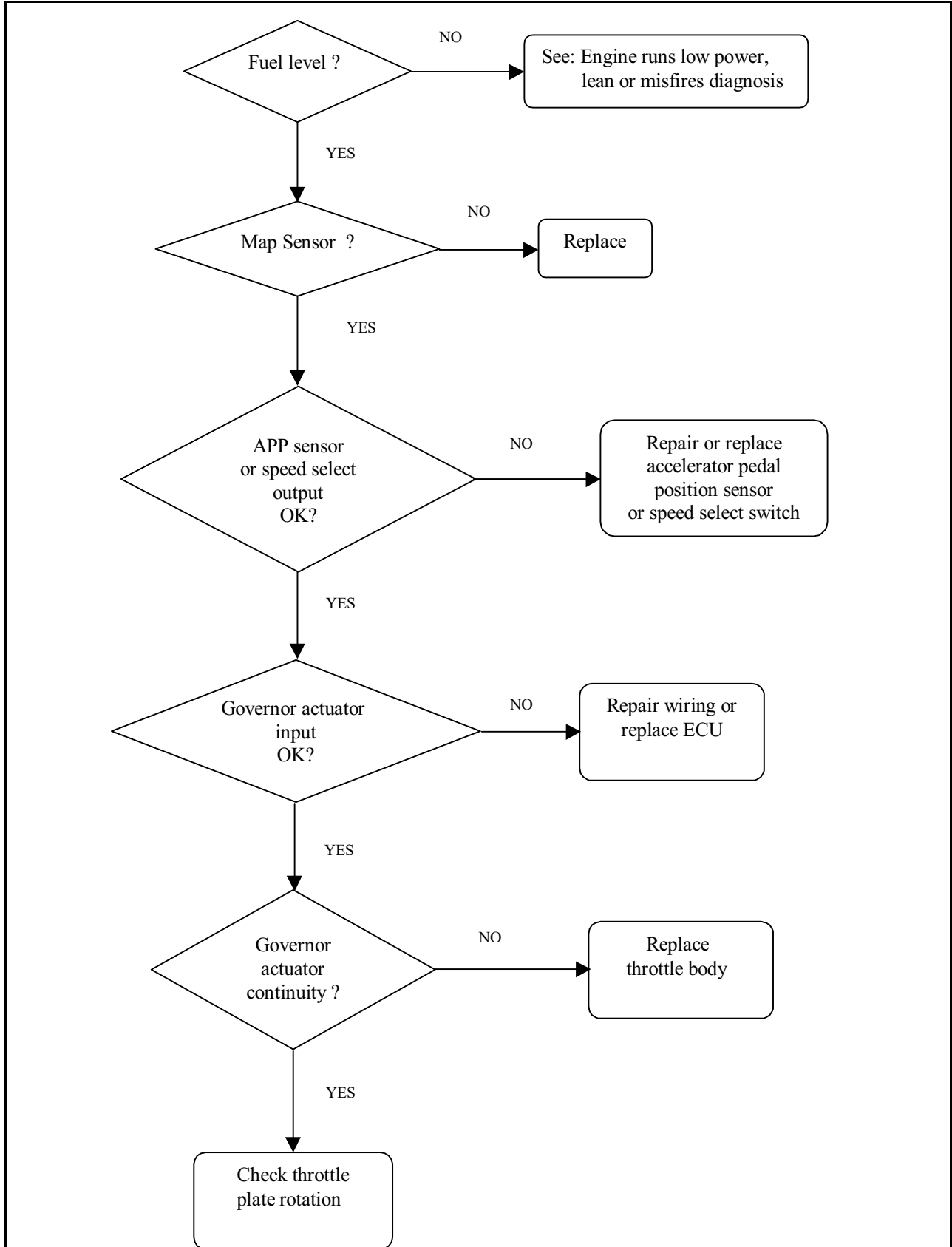


# DIAGNOSTIC PROCEDURES

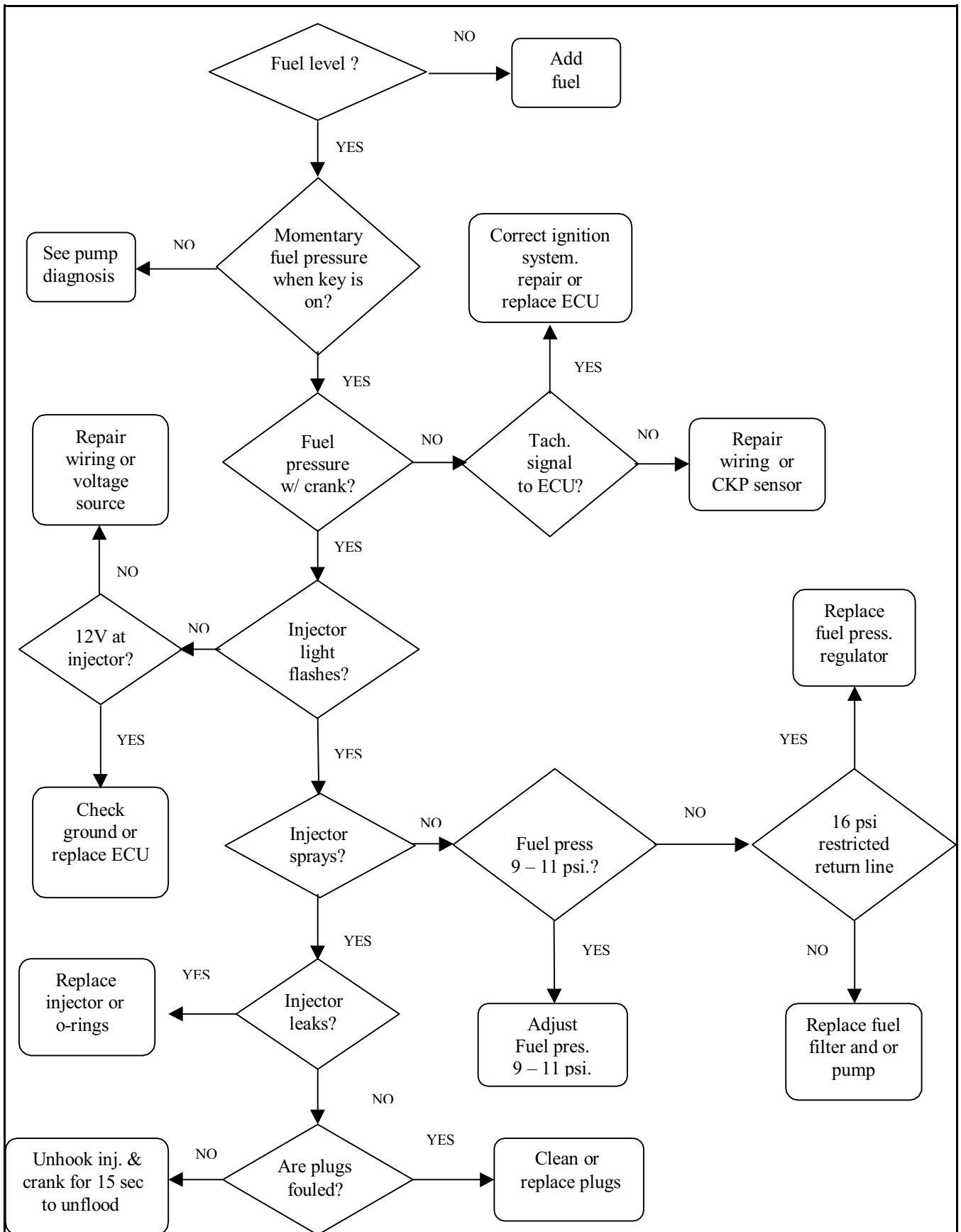
Engine runs erratically poor governor performance

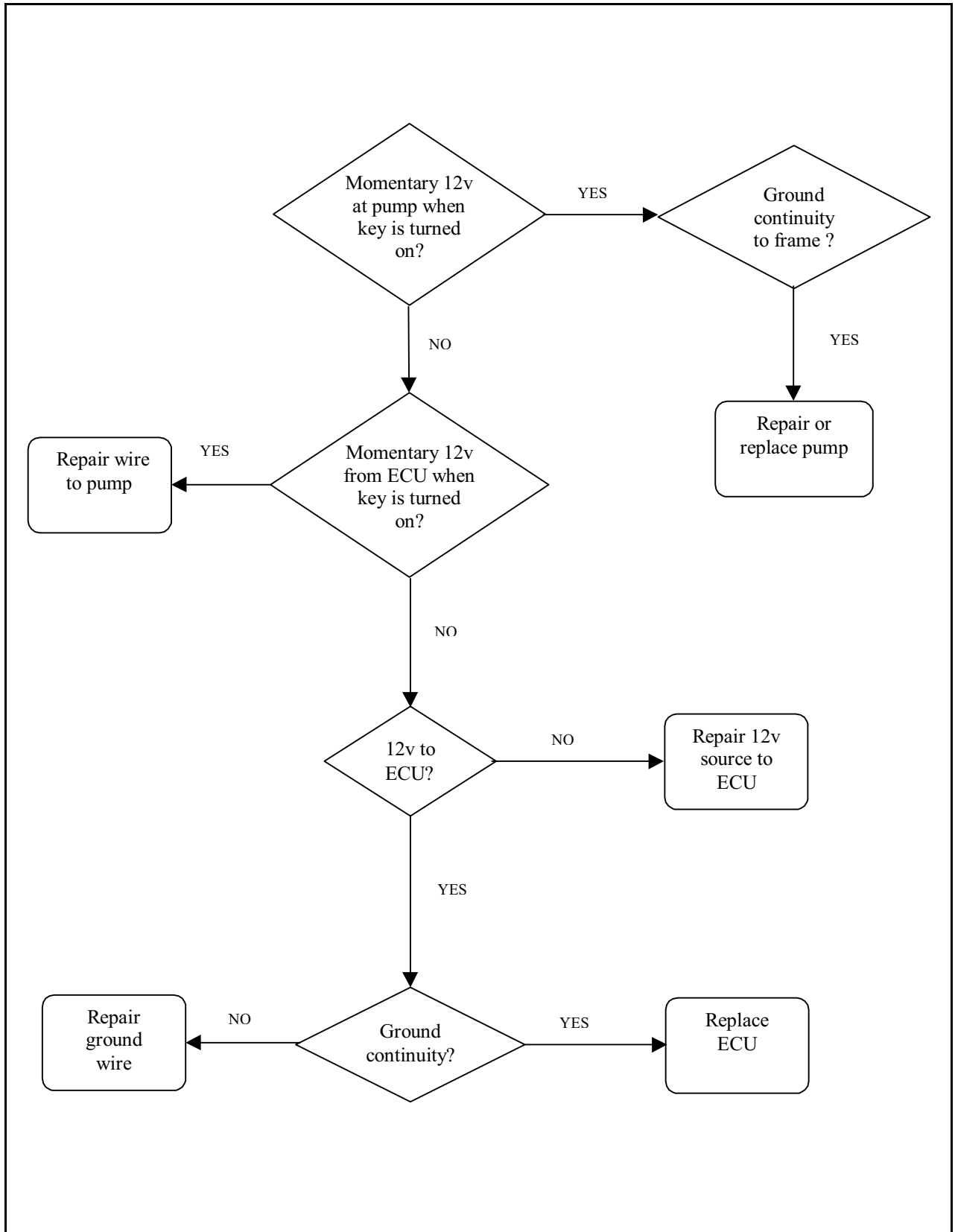


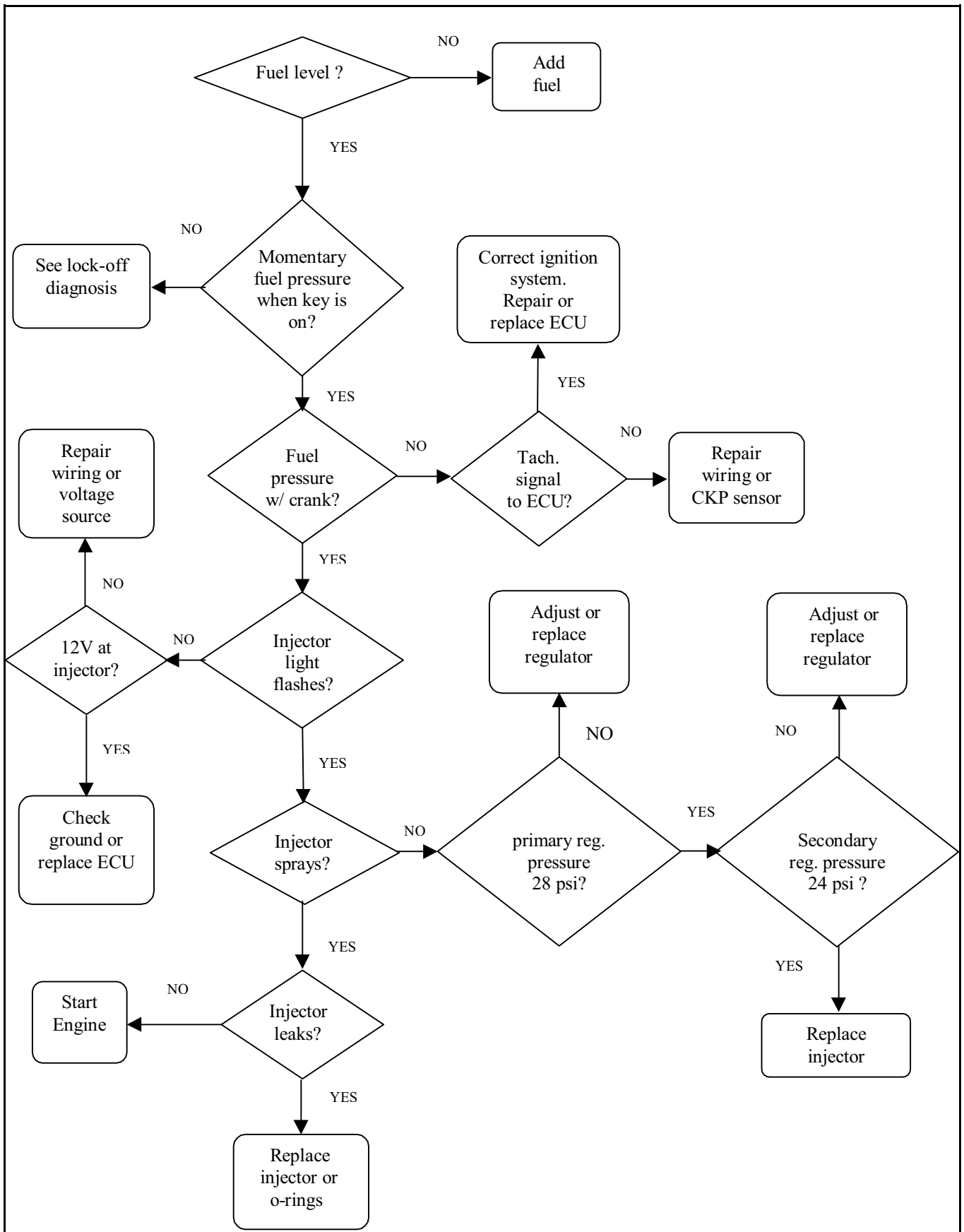


# DIAGNOSTIC PROCEDURES

Engine won't start – gasoline

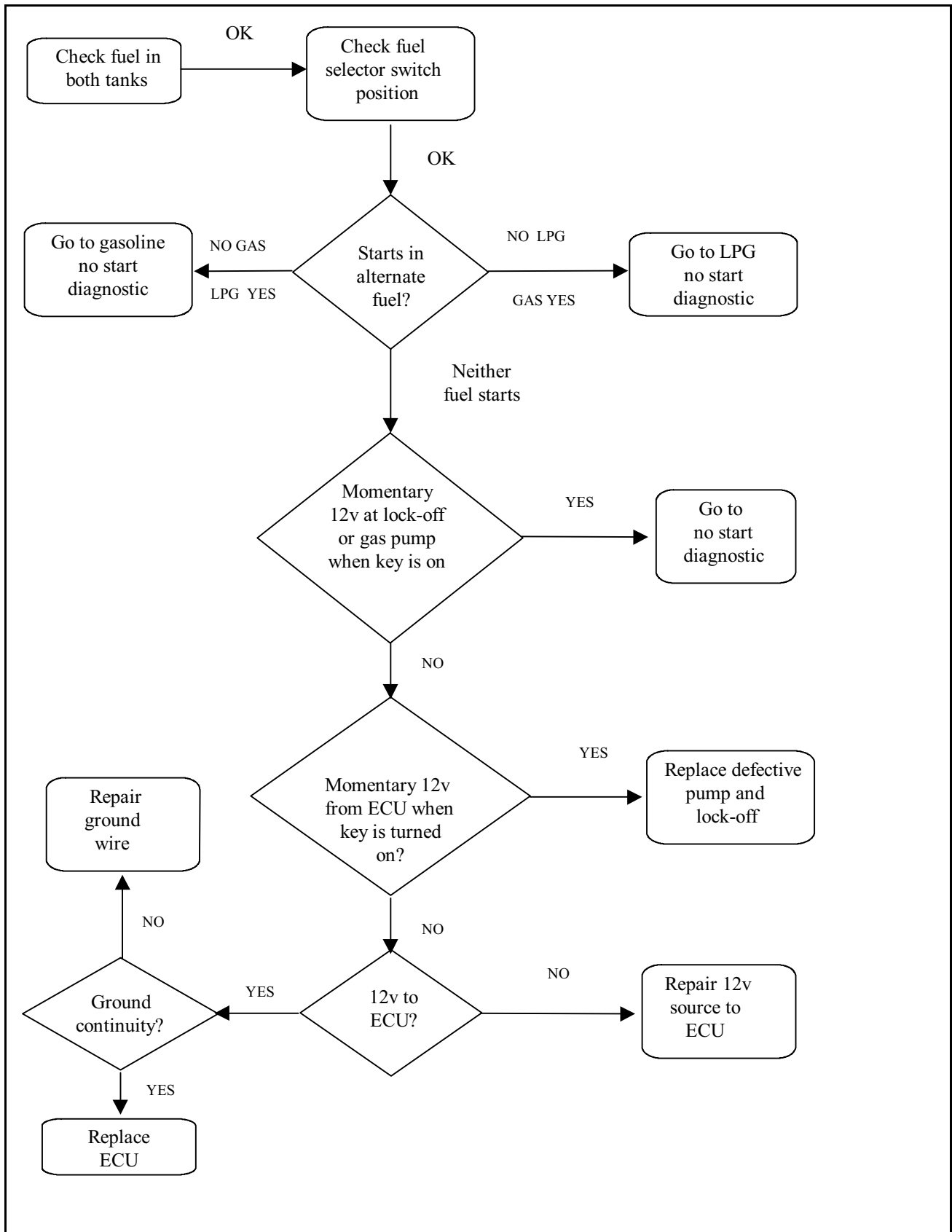






# DIAGNOSTIC PROCEDURES

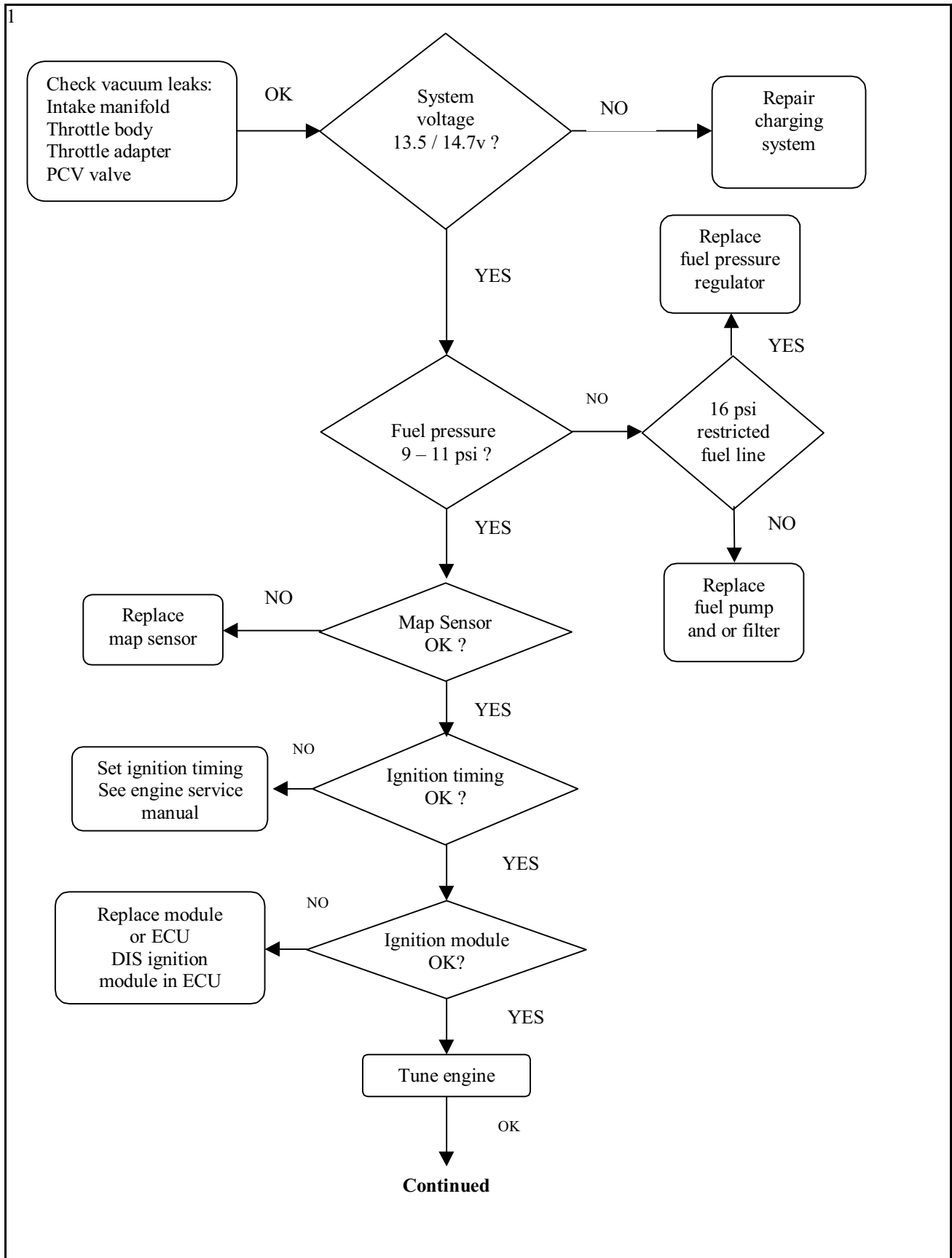
## Engine won't start – dual fuel



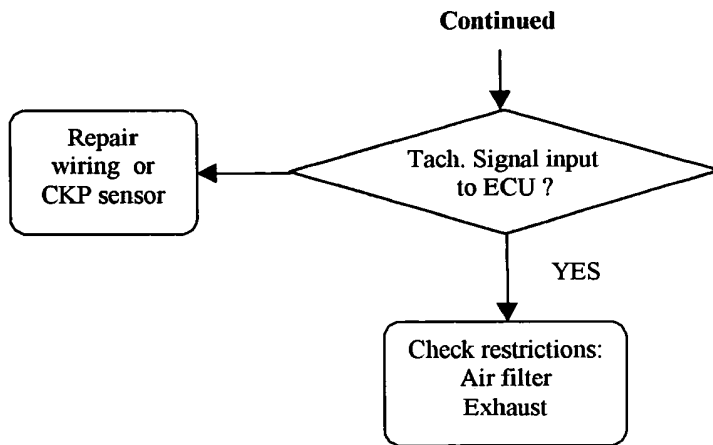


# DIAGNOSTIC PROCEDURES

Engine runs low power, lean or misfires – gasoline

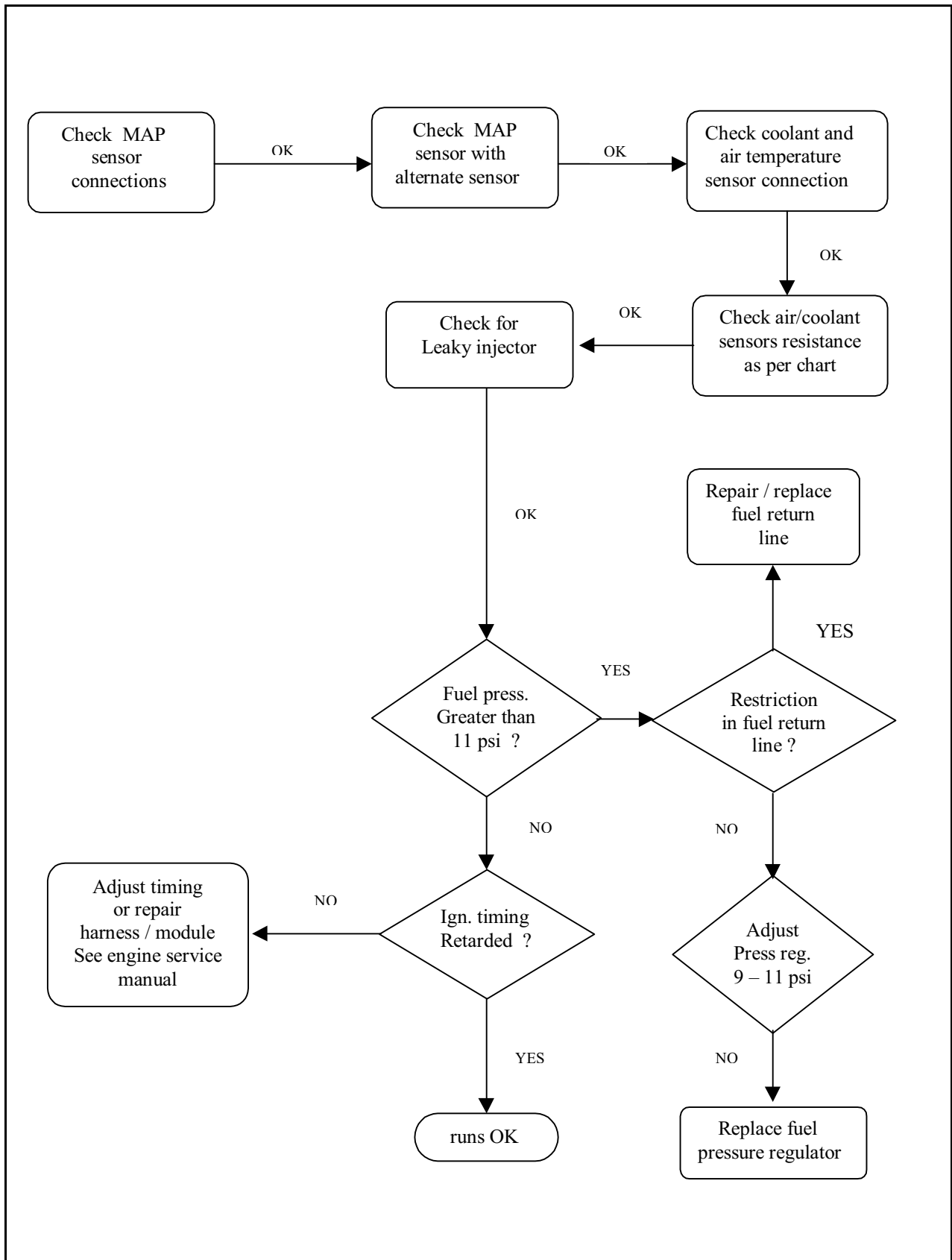


2



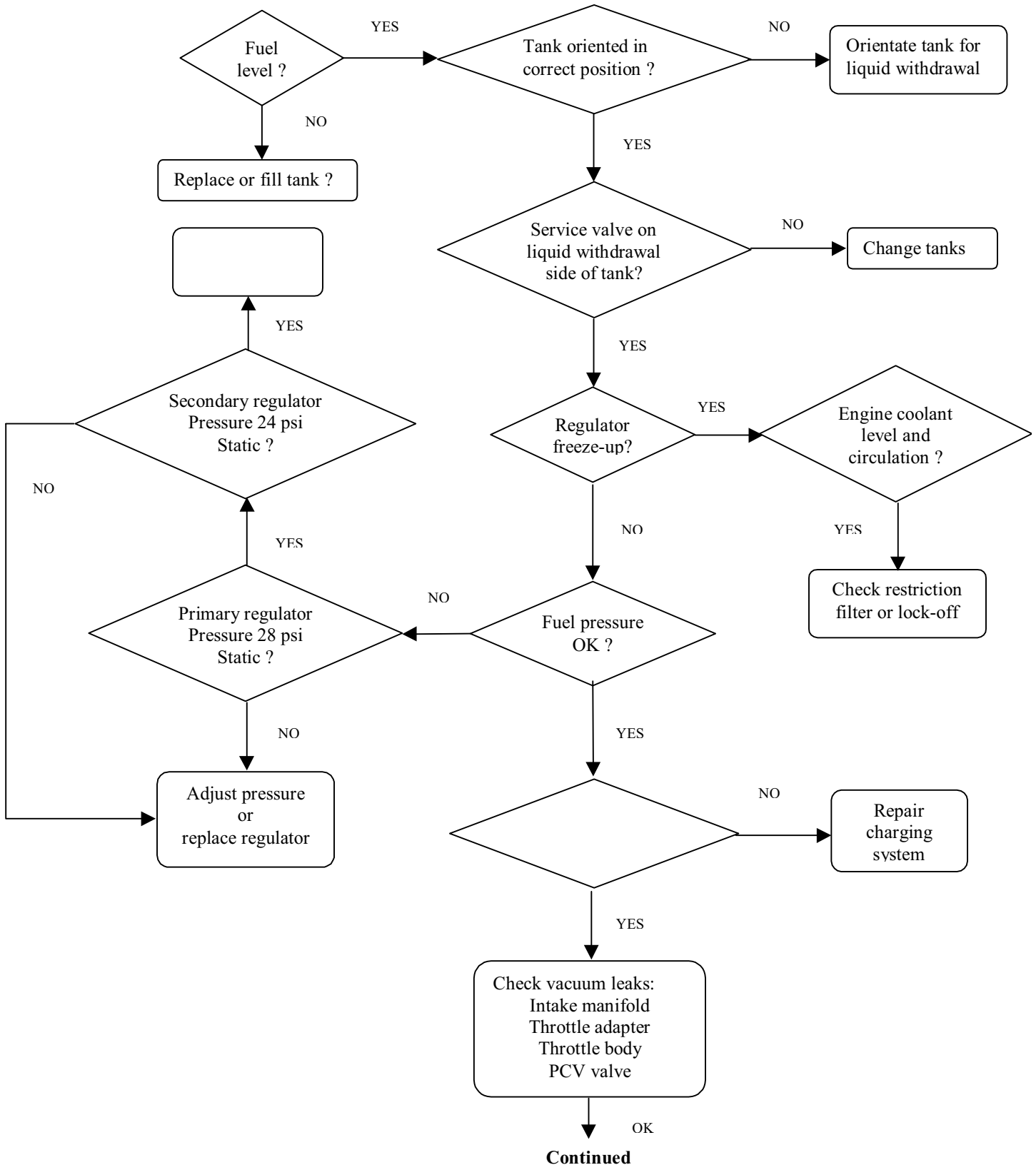
# DIAGNOSTIC PROCEDURES

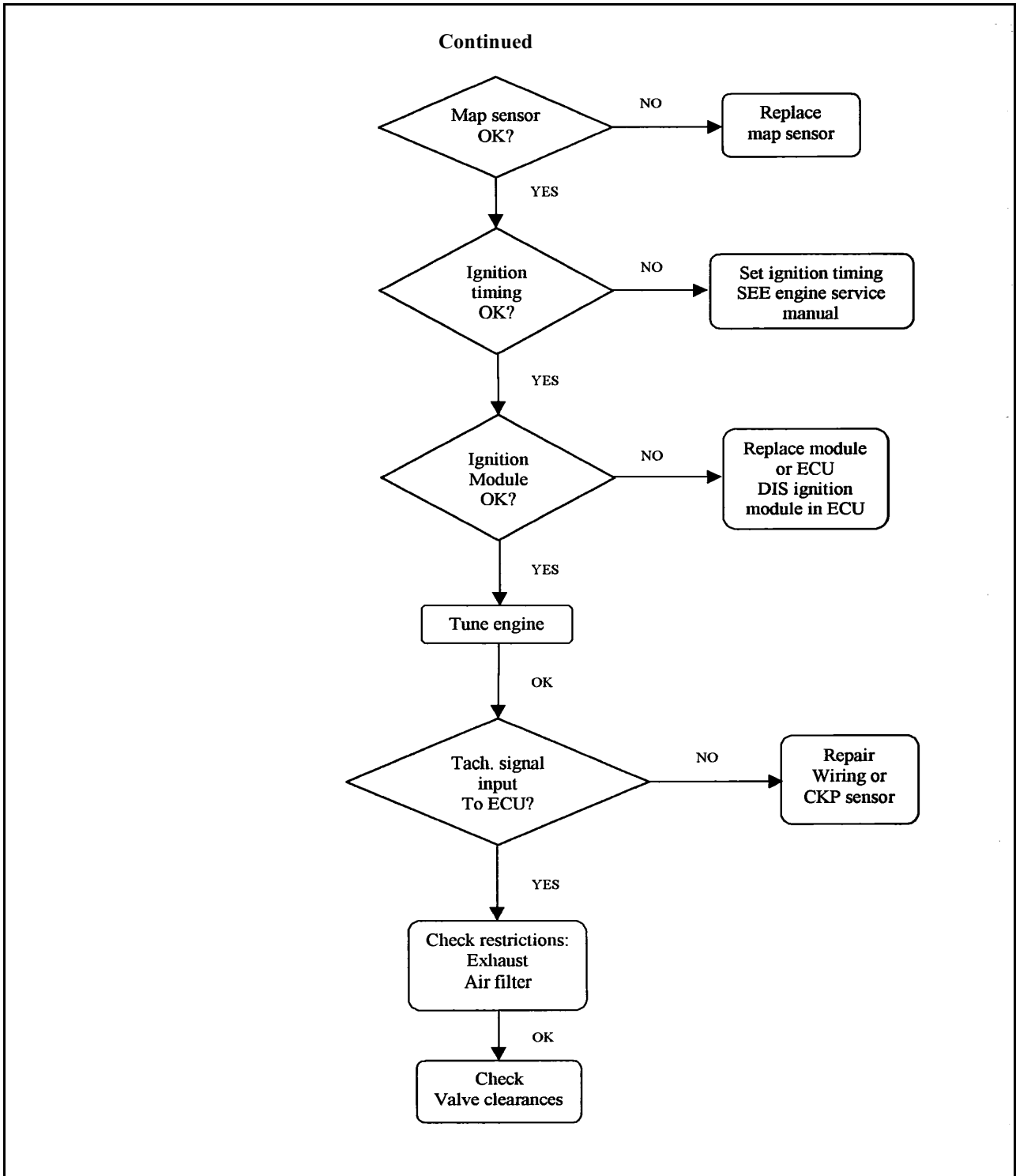
Engine runs rich – gasoline



# DIAGNOSTIC PROCEDURES

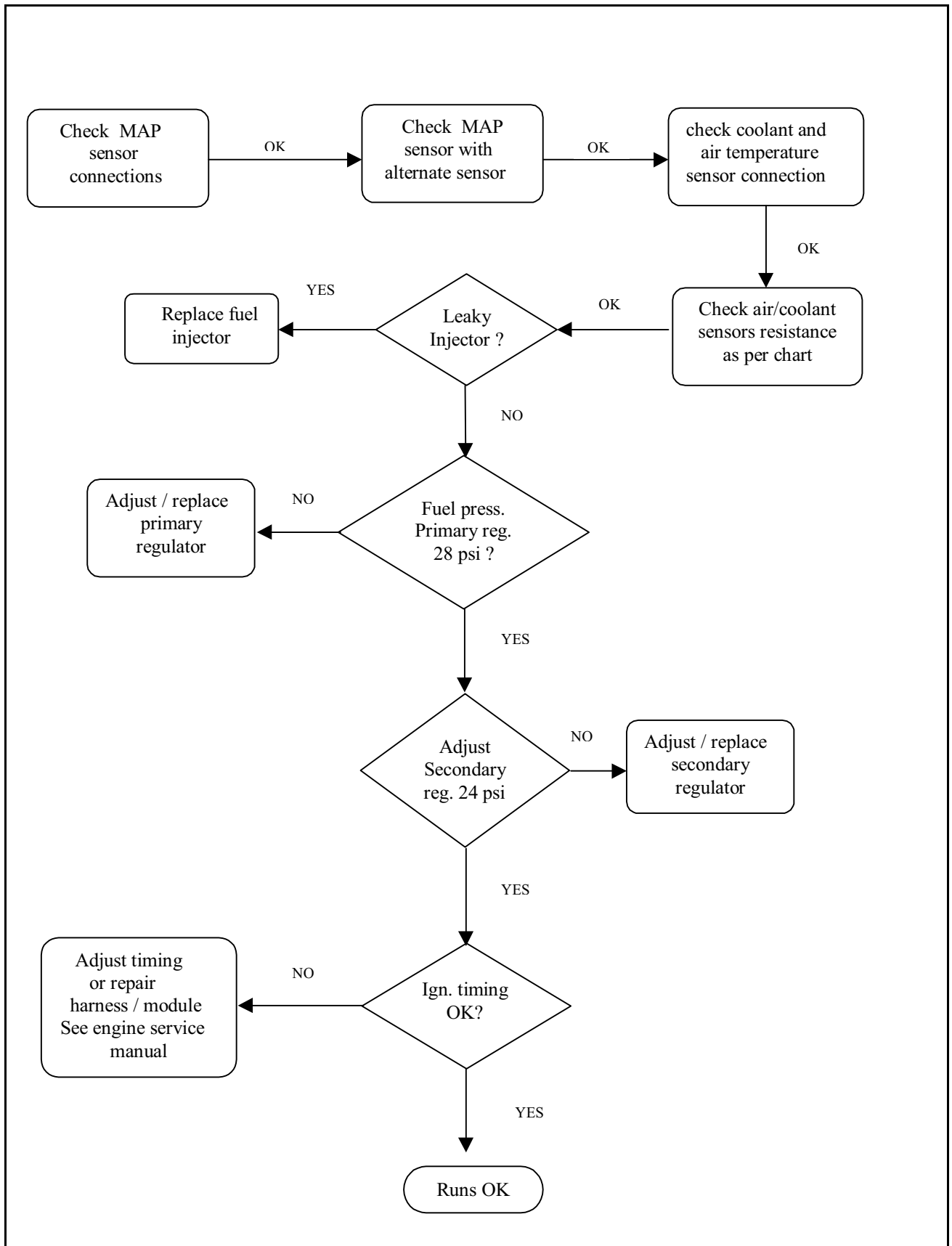
Engine runs low power, lean or misfires – LPG



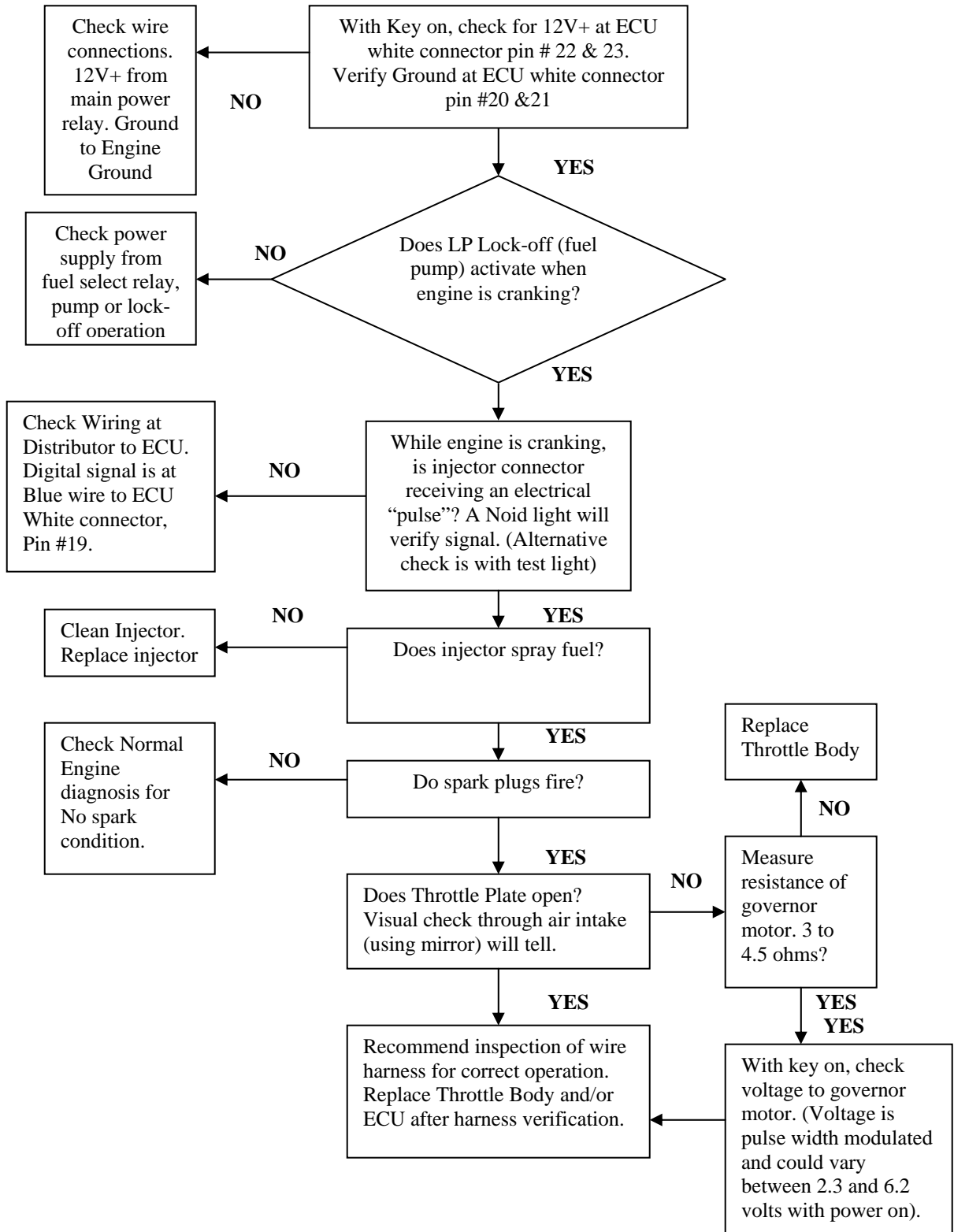


# DIAGNOSTIC PROCEDURES

Engine runs rich – LPG

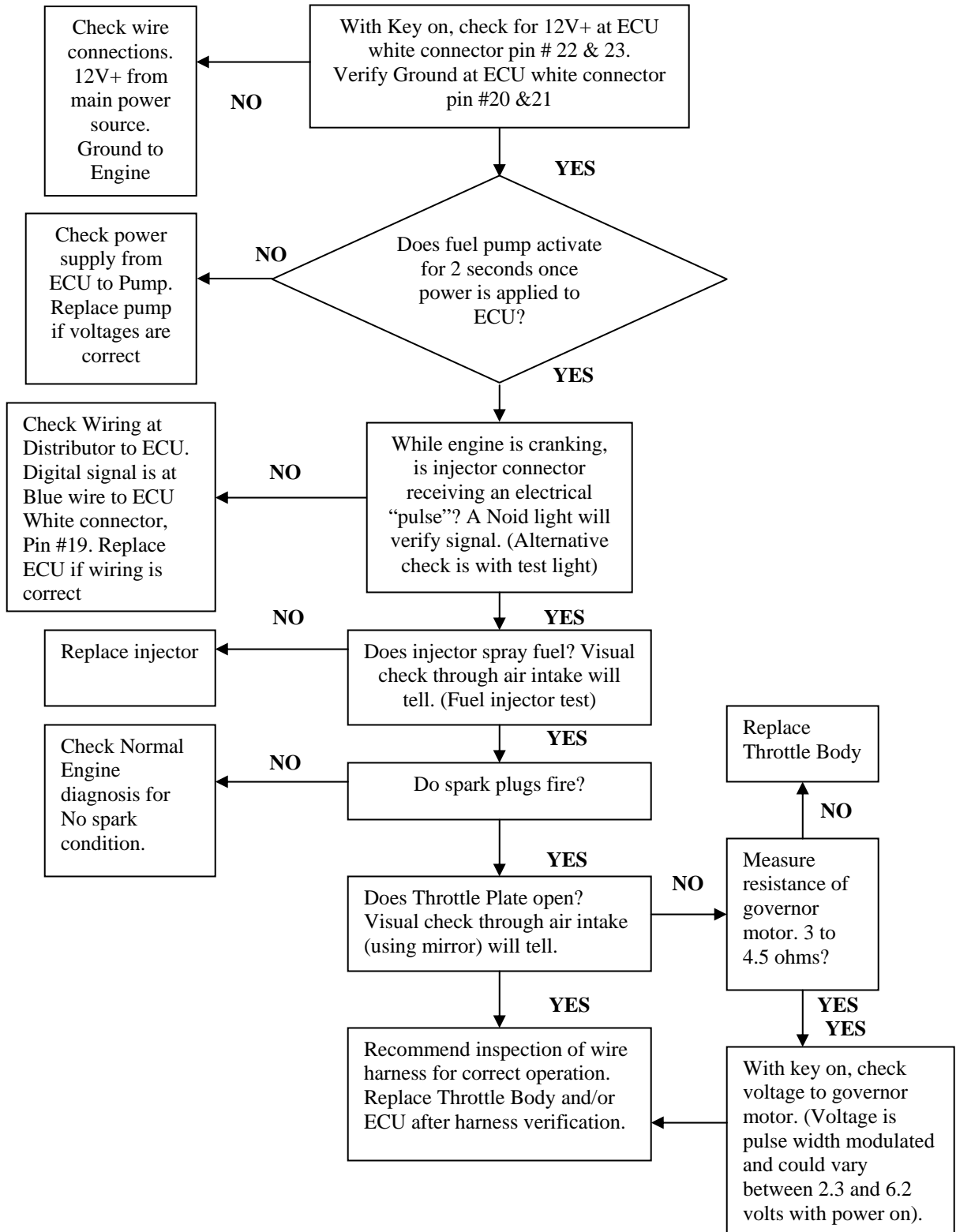


**Engine Will Not Start**  
**As with any no start symptom, always check fuel level first.**



**Engine Will Not Start**

**As with any no start symptom, always check fuel level first.  
Be sure that fuel selector switch is not in the center (or "off") position.**





**Engine Will Not Start**

**As with any no start symptom, always check fuel level first.**

**Be sure that fuel selector switch is not in the center (or "off") position.**

