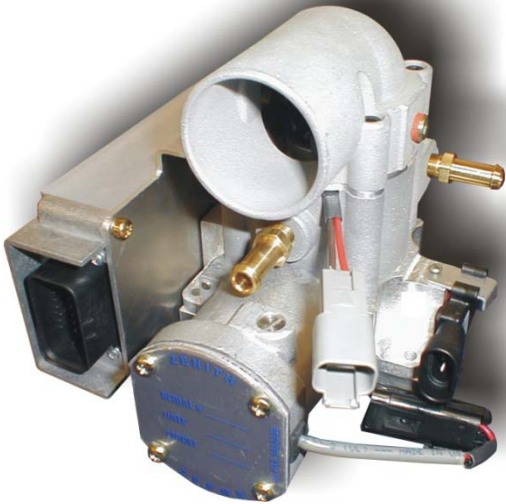
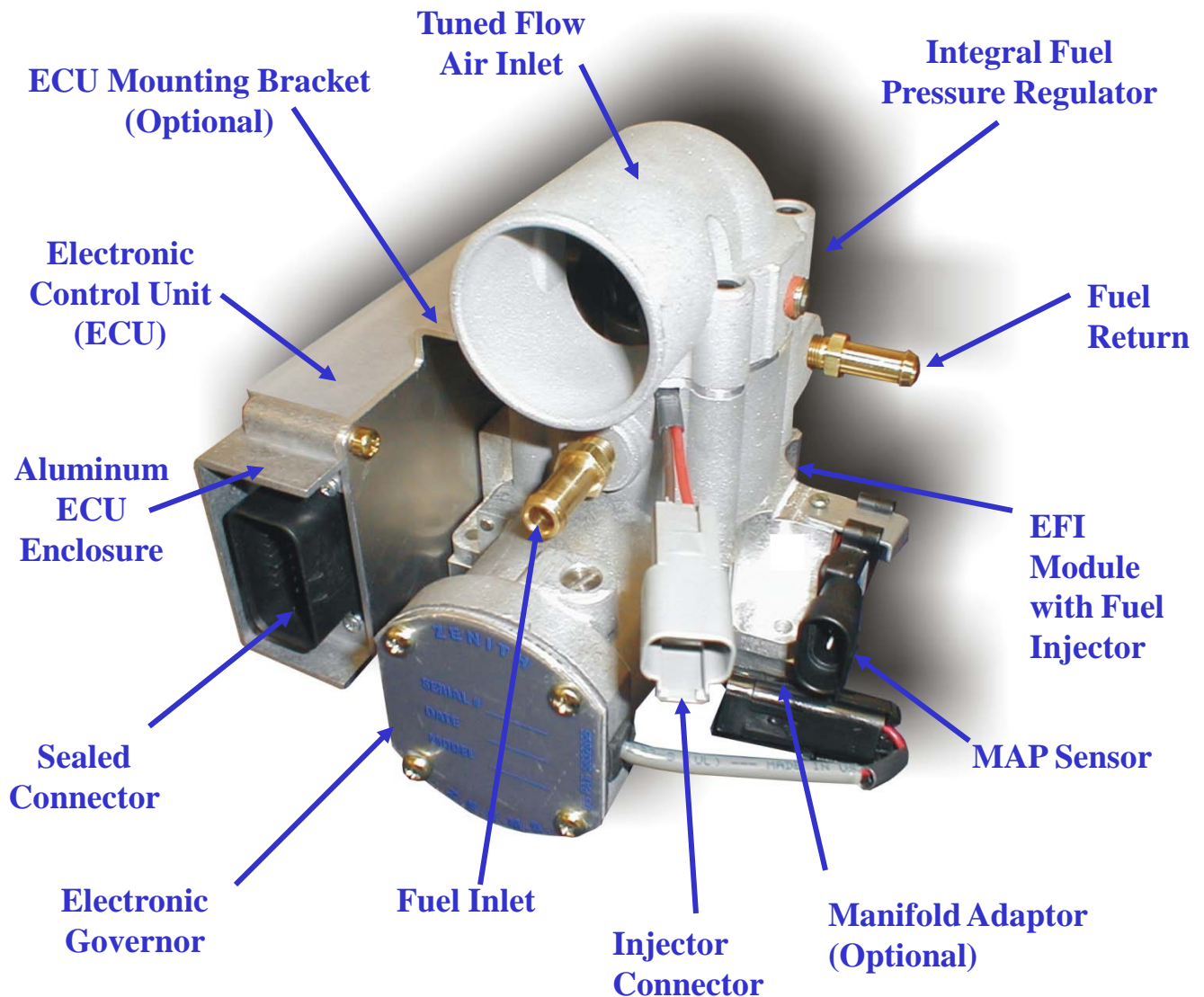


ZENITH
FUEL SYSTEMS, LLC

ZEEMS II
Modular Fuel Systems



Electronic Fuel Injection System With Drive By Wire Gasoline



**Note: Water & Air
Sensors Not Shown**



General Specifications

Electronic Fuel Injection

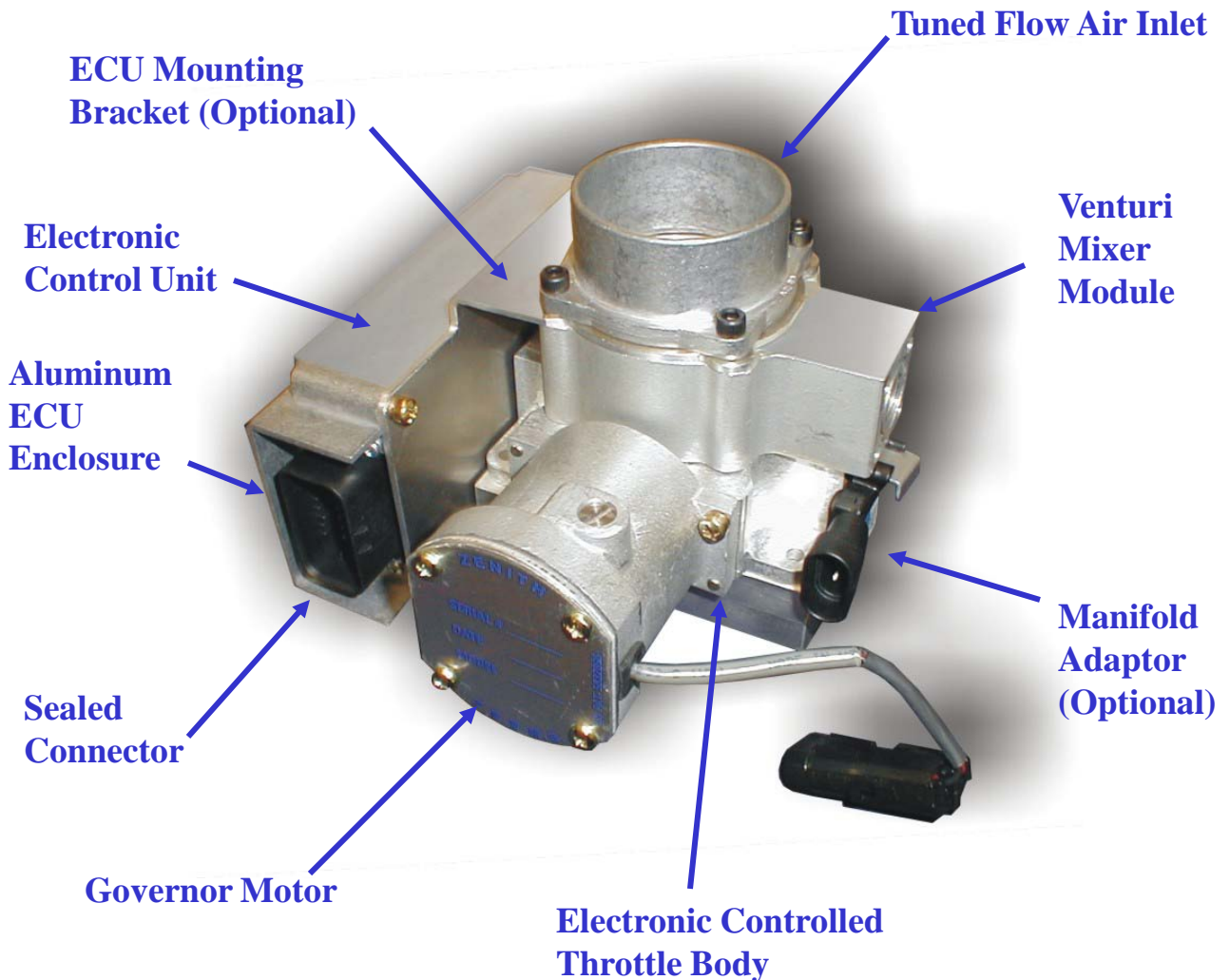
With Drive By Wire

Gasoline

Applications:	Fixed RPM 1.0L-5.8L @ 1800 RPM*
	Mobile 1.0L-5.8L @ 3200 RPM*
Generator Sets	5 kilowatt- 100 kilowatt
Throttle Bores:	1.023” / 1.181” / 1.297”/ 1.417”/ 1.535”
	1.653”/ 1.771”/ 1.889”/ 1.968” / 2.165”
Flow Capability:	250 CFM @ 2.0” Hg
Power:	7 HP- 160 HP
Air Intake Size:	2.0” Outside Diameter, 90 Degree
Fuel Types:	Gasoline, Gasohol
Fuel Injector Sizes:	33, 42, 50, 69 lb./hr @ 15 PSI
Operating Pressure:	20 PSI Maximum
Operating Temperature:	-20° to 220 °F

Note: *See General System Application for more Information

Mixer Module Assembly With Drive By Wire Gaseous Fuel





General Specifications

Mixer Module Assembly

With Drive By Wire

Gaseous Fuel

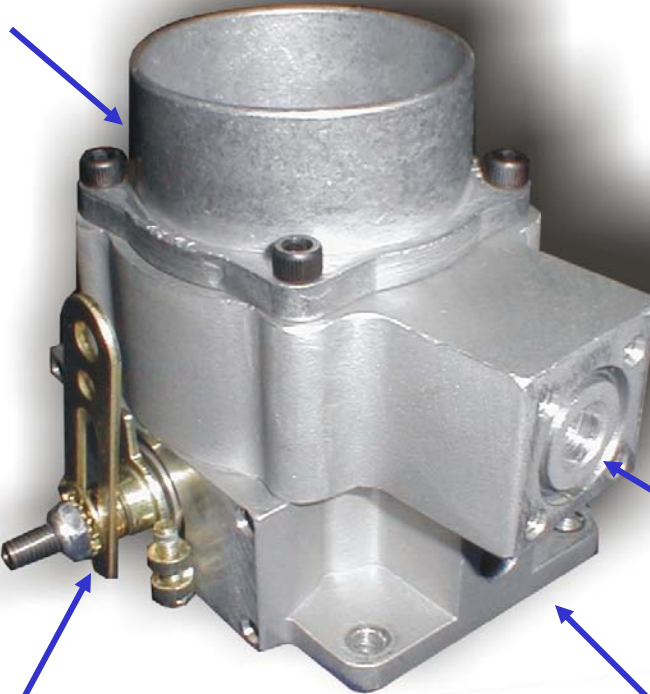
Applications:	Fixed RPM 1.0L-5.8L @ 1800 RPM* Mobile 1.0L-5.8L @ 3200 RPM*
Generator Sets	5 kilowatt-100 kilowatt
Flow Capability:	250 CFM @ 2.0" Hg
Power:	7 HP- 140 HP
Fuel Types:	Propane / Natural Gas
Venturi Sizes:	14mm, 16mm, 18mm, 20mm, 22mm, 24mm, 26mm, 28mm, 30mm, 32mm, 34mm, 36mm, 38mm, 40mm, 42mm, 44mm, 46mm, 48mm, 50mm
Regulator:	Zero Pressure Regulator
Temperature:	-20° to 220 °F

Note: *See General System Application for more Information

Mixer Module Assembly With Manual Actuator

Gaseous Fuel

Tuned Flow Air Inlet



Venturi Mixer
Module

Fuel Inlet

Manual Throttle
Body

Manifold Adapter
(Optional)



Mixer Module Assembly

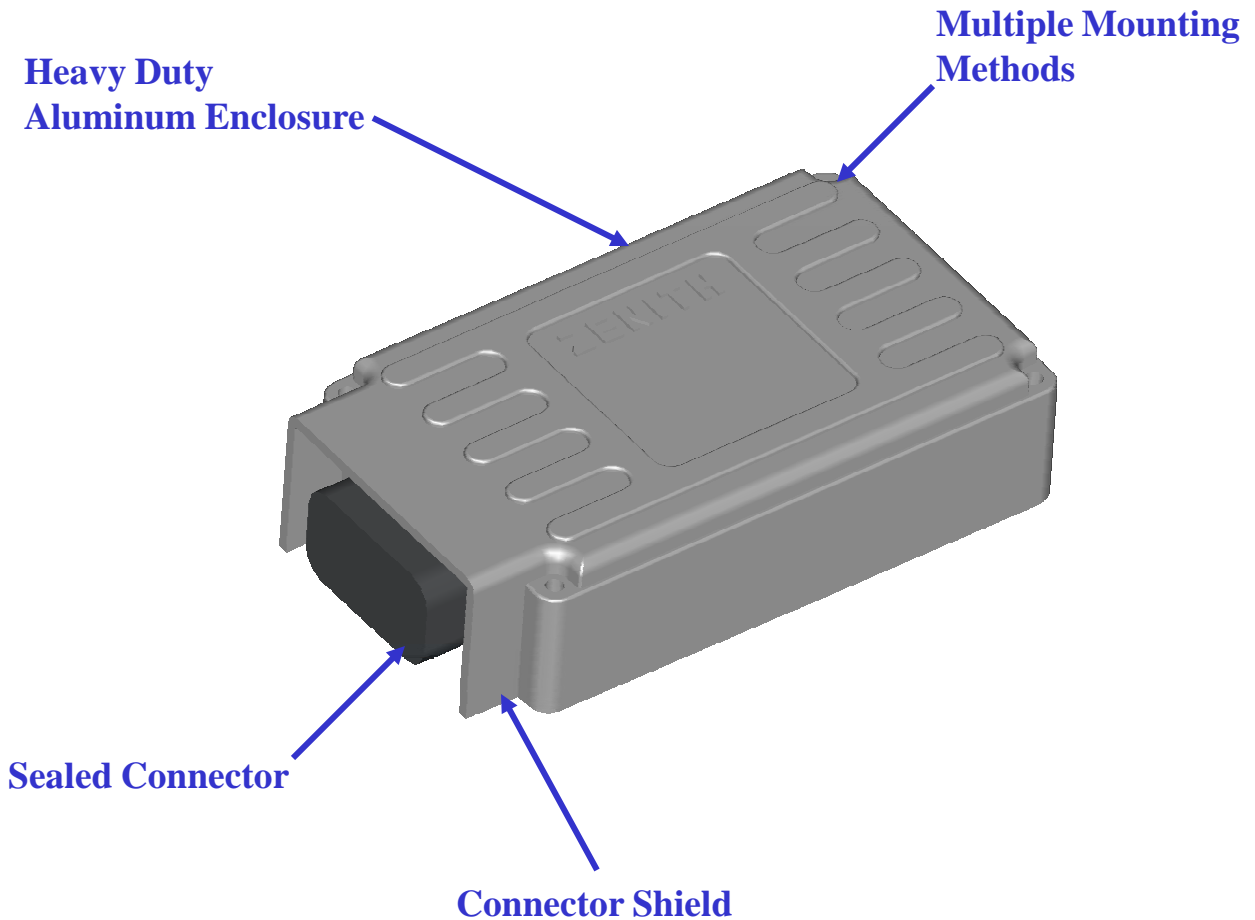
With Manual Actuator

Gaseous Fuel

Applications:	Fixed RPM 1.0L-5.8L @ 1800 RPM*
Generator Sets	5 kilowatt-100 kilowatt
Flow Capability:	255 CFM @ 2.0" Hg
Power:	7 HP- 140 HP
Fuel Types:	Propane / Natural Gas
Venturi Sizes:	14mm, 16mm, 18mm, 20mm, 22mm, 24mm, 26mm, 28mm, 30mm, 32mm, 34mm, 36mm, 38mm, 40mm, 42mm, 44mm, 46mm, 48mm, 50mm
Regulator:	Zero Pressure Governor
Temperature:	-20° to 220 °F

Note: *See General System Application for more Information

Multi-Function Electronic Control Unit (ECU)





General Specifications

Electronic Control Unit

Power Input: 12 VDC (7-18 VDC)
Reverse Polarity Protection

Power Consumption: 65 W Maximum

Operating Temperature: -20° to 105 °C

Control Characteristics

Control: Microprocessor with CAN Bus

Speed Input: Magnetic Pickup, Ignition Coil Input or
Digital Input

MPU Input: 100 to 12,000 Hz

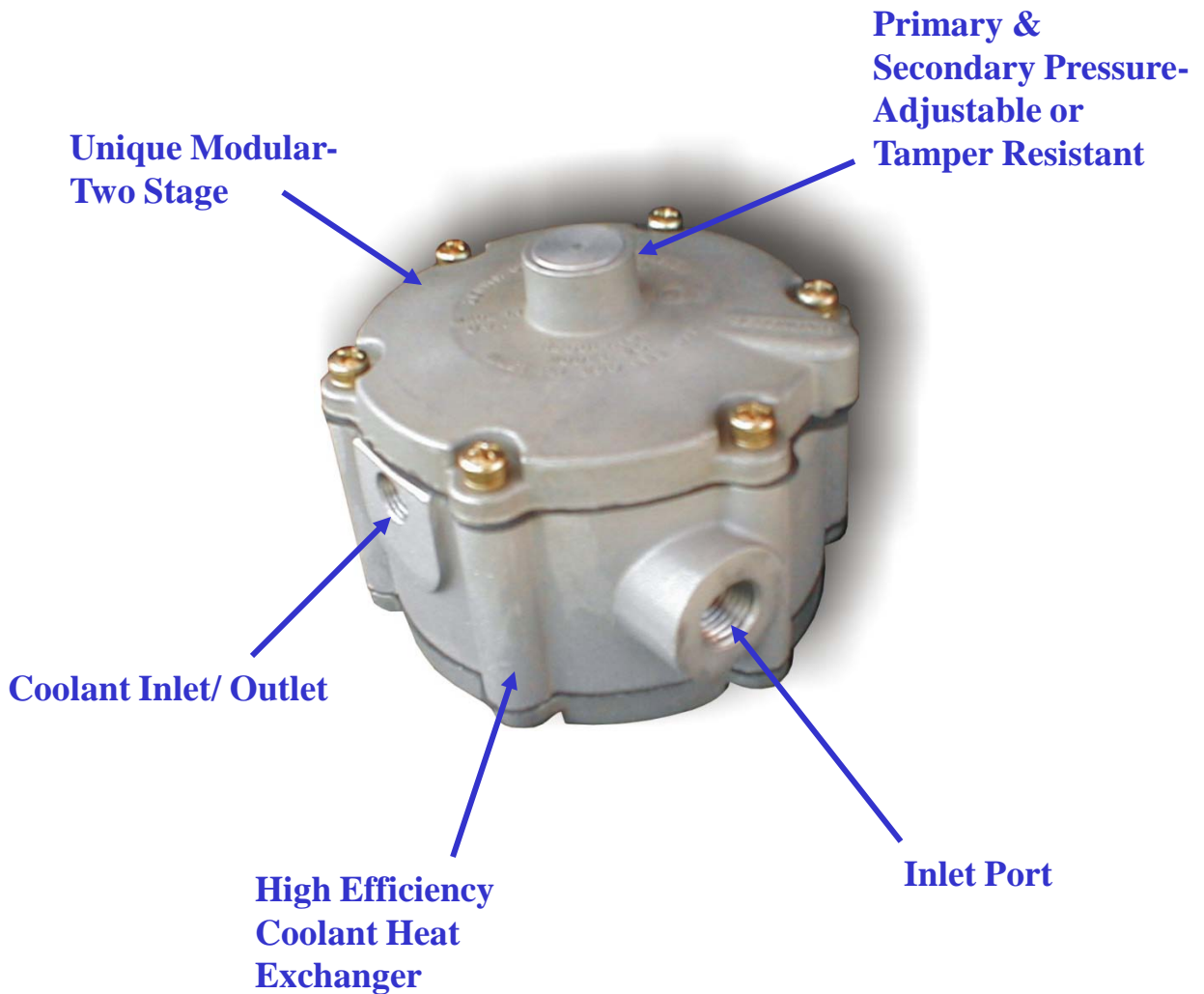
IGN Input: 1, 2, 3, 4, 5, 6 & 8 Cylinder Engines with
Rated Speeds of 50-5000 RPM

Engine Type: 2 Cycle or 4 Cycle: Gasoline or Gaseous Fuel

Target Speed: Programmable

Actuator: High-Efficiency Toroid Governor

Dual Stage, Multi Function Gaseous Fuel Regulator





General Specifications

Dual Stage, Multi Function

Gaseous Fuel Regulator

Unique Modular-Multi-Function, Two Stage

Inlet: Liquid Propane, Propane Vapor or Natural Gas

Operating Inlet Pressure: 312 PSI Maximum

Variable Positive Outlet Pressure or Zero Governor

Positive Pressure Regulator: (312 PSI to +15 PSI)

Zero Pressure Regulator: (312 PSI to <1 PSI)

Adjustable Pressure or Tamper Resistant

Capacity: 7HP-100 HP @ 15 PSI Output Pressure

Environmental Operating Range: -20° to 220 °F

High Efficiency Coolant Heat Exchanger

Integral Mounting Pads

Inlet Port: 1/4" or 3/8 FNPT

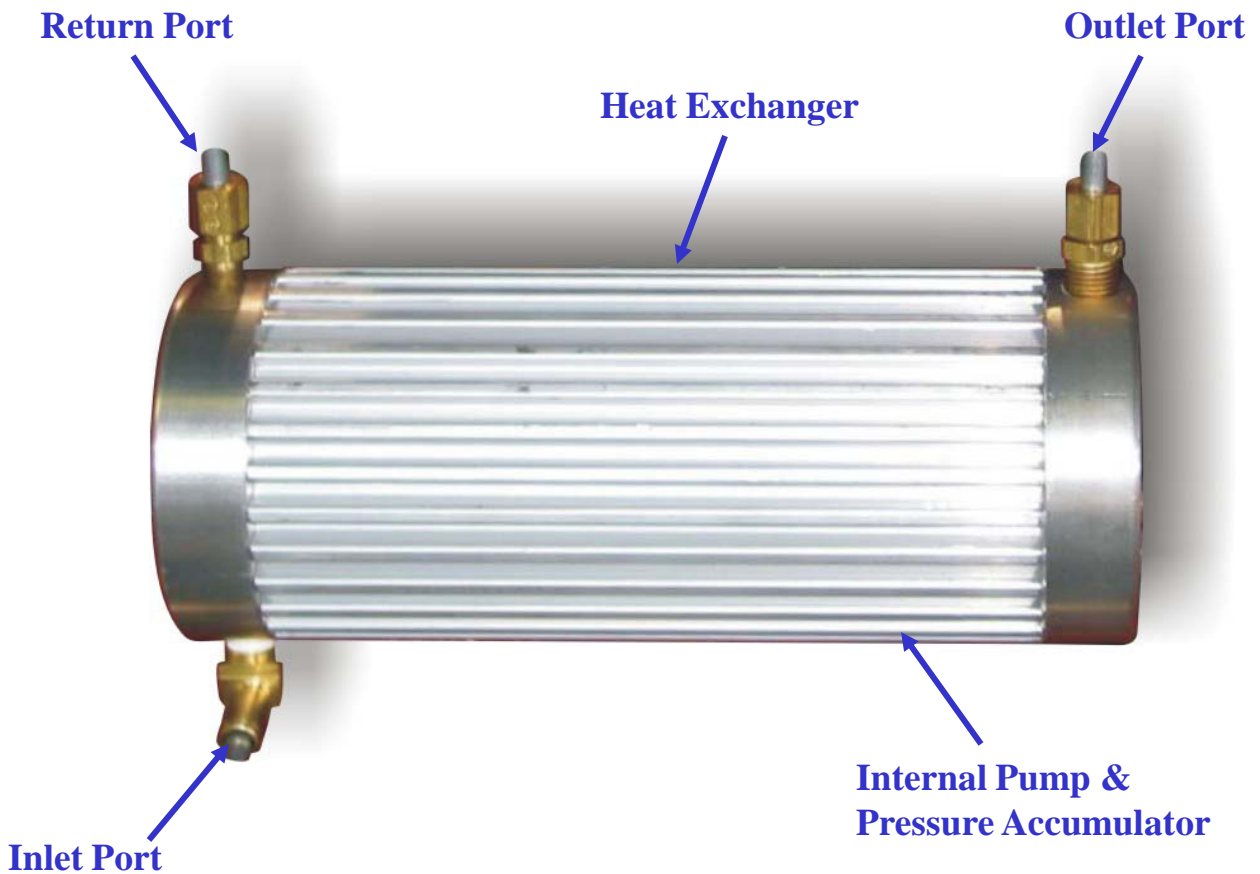
Outlet Port: 1/4" , 3/8 or 1/2" FNPT

Coolant Inlet/ Outlet: 3/8" FNPT

FUEL CELL

Fuel Pump Replacement

Makes Return Lines to The Tank Obsolete





Engine Size

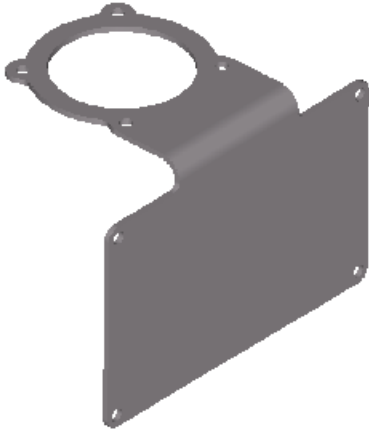
General System Applications

ENGINE DISPLACEMENT		MAXIMUM RPM 1800	MAXIMUM RPM 2400	MAXIMUM RPM 3200	MAXIMUM RPM 3600	MAXIMUM RPM 3800	MAXIMUM RPM 4000
Liter	Cubic Inch	Throttle Plate Size	Throttle Plate Size	Throttle Plate Size	Throttle Plate Size	Throttle Plate Size	Throttle Plate Size
1.0	61	0.865	0.865	1.023	1.181	1.181	1.181
1.2	73	1.023	1.023	1.181	1.181	1.181	1.181
1.3	79	1.023	1.023	1.181	1.181	1.181	1.297
1.5	92	1.023	1.181	1.297	1.297	1.297	1.297
1.6	98	1.023	1.181	1.297	1.297	1.417	1.417
2.0	122	1.297	1.297	1.417	1.417	1.417	1.535
2.5	153	1.297	1.297	1.535	1.535	1.535	1.653
3.0	183	1.297	1.417	1.653	1.653	1.771	1.771
4.2	256	1.535	1.653	1.889	1.968	1.968	2.165
4.3	262	1.535	1.653	1.889	1.968	1.968	2.165*
5.0	305	1.535	1.771	1.968	2.165*	NA	NA
5.7	350	1.653	1.889	2.165*	NA	NA	NA
5.8	351	1.653	1.889	2.165*	NA	NA	NA
7.0	427	1.889	2.165*	NA	NA	NA	NA
7.4	454	1.889	2.165*	NA	NA	NA	NA
7.5	460	1.889	NA	NA	NA	NA	NA
8.1	496	1.968	NA	NA	NA	NA	NA
8.2	502	1.968	NA	NA	NA	NA	NA

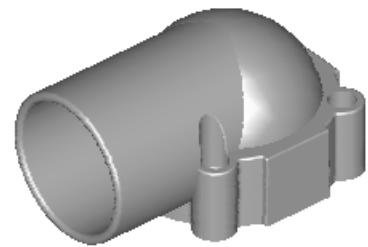
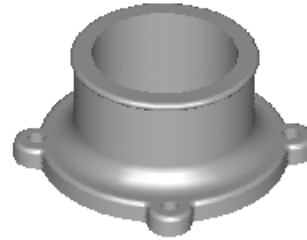
Note: Use 2.0" 90 Degree OR Straight, Downdraft, Air Horn

Note * Use 2.0" Straight, Down Draft, Air Horn Only

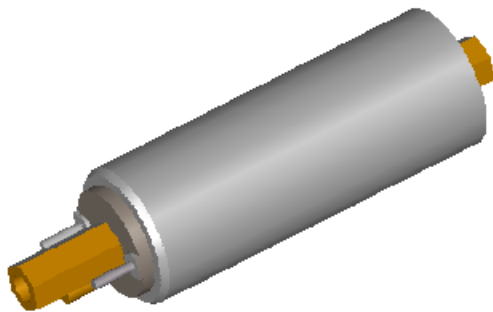
Options



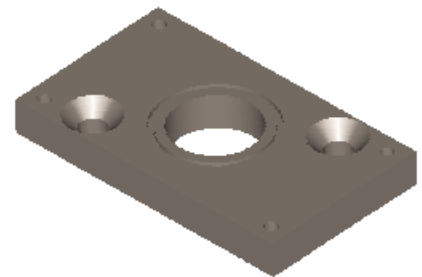
ECU Mounting Brackets



Air Horn Types



Electric Fuel Pumps



Custom Manifold Adaptors

Standard & Custom Wire Harnesses

